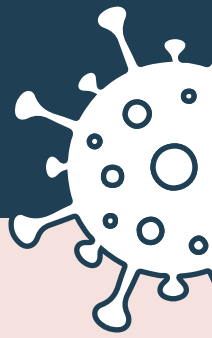


COVID-19

# PAUSE TO SAVE LIVES



## Open



Two-household gathering  
(high precautions)\*



Small outdoor gatherings  
(25 people)



Retail



Preschool through 8th grade  
(local district choice)



Childcare



Manufacturing, construction,  
other work that is impossible  
to do remotely



Public transit



Hair salons, barber shops,  
other personal services



Gyms and pools  
(for individual exercise)



Restaurants and bars (outdoor  
dining, takeout, and delivery)



Professional sports\*\*  
(without spectators)



Parks and outdoor  
recreation



Funerals  
(25 people)



Health care

\*See Social Gathering Guidance.

\*\*Includes a limited number of NCAA sports.

## Not open



High schools  
(in-person learning)



Theaters, movie theaters,  
stadiums, arenas



Colleges and universities  
(in-person learning)



Bowling centers, ice skating  
rinks, indoor water parks



Workplaces, when work can  
be done from home



Bingo halls, casinos,  
arcades



Restaurants and bars  
(indoor dining)



Group fitness classes



Organized sports, except  
professional sports

For more information about the order, visit [Michigan.gov/Coronavirus](https://Michigan.gov/Coronavirus).  
Questions or concerns can be emailed to [COVID19@michigan.gov](mailto:COVID19@michigan.gov).